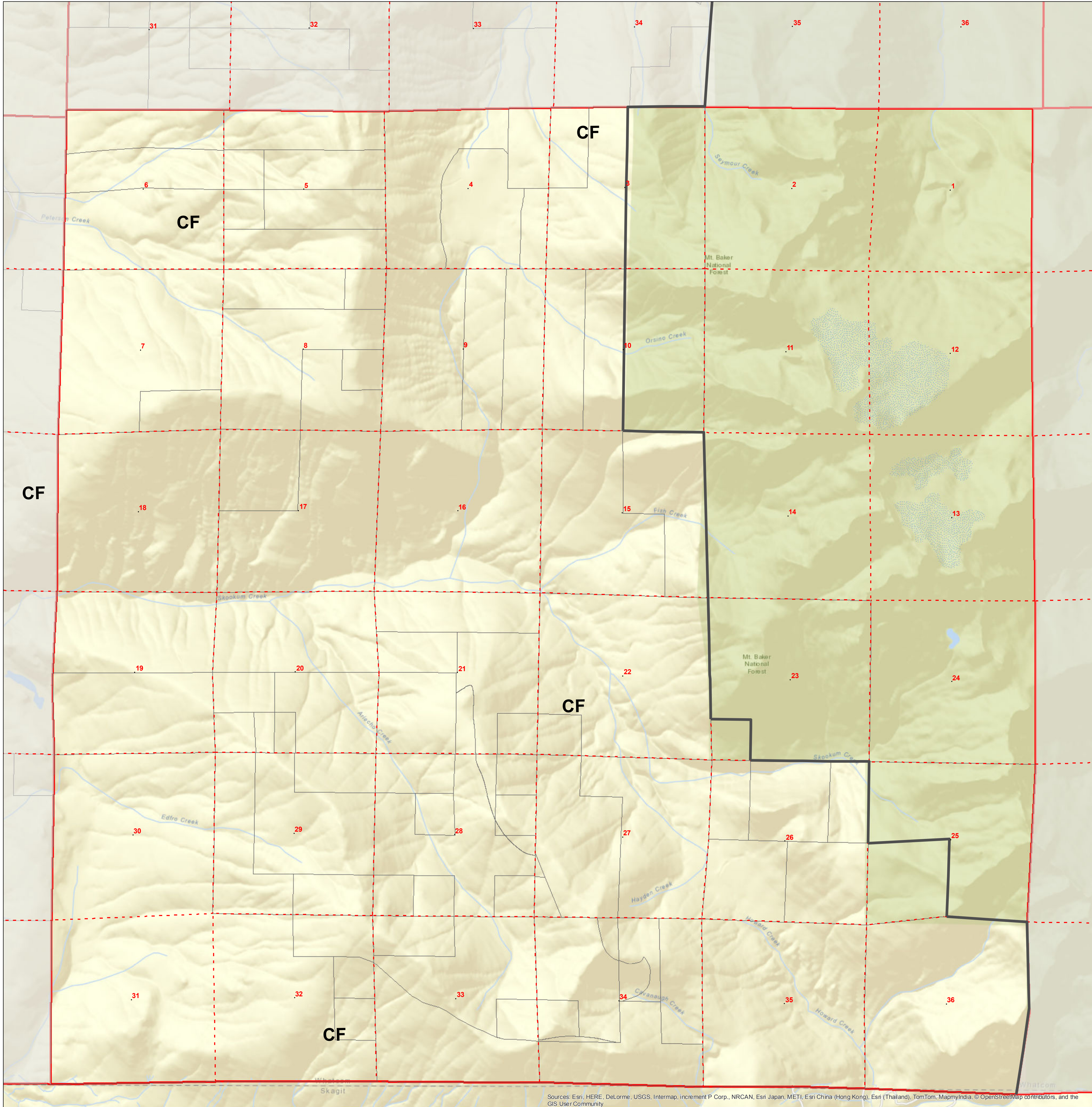









# WHATCOM COUNTY - Title 20 Zoning Designations -



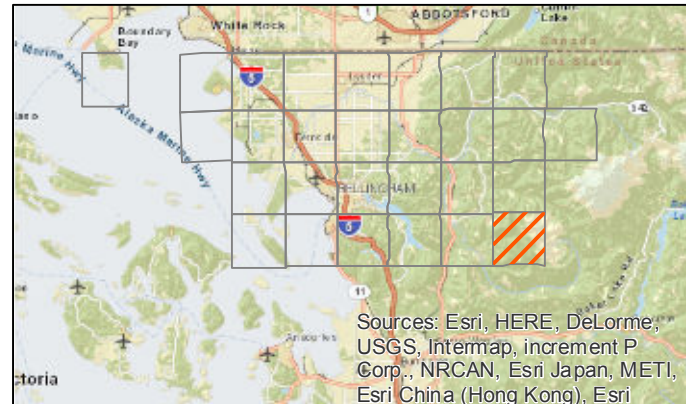
### Zoning Designations

- |           |  |     |  |
|-----------|--|-----|--|
| URMX      | <b>URBAN RESIDENTIAL</b><br>Urban Resid. Mixed Use         | HII | <b>INDUSTRIAL</b><br>Heavy Impact Industrial |
| URMX10-24 | Urban Resid. Mixed Use 10-24 Units/Acre                    | LII | Light Impact Industrial                      |
| URMX6-12  | Urban Resid. Mixed Use 6-12 Units/Acre                     | GM  | General Manufacturing                        |
| URMX6-10  | Urban Resid. Mixed Use 6-10 Units/Acre                     | GI  | Gateway Industrial                           |
| URM24     | Urban Resid. Medium Density 24 Units/Acre                  | RIM | Rural Industrial Manufacturing               |
| URM18     | Urban Resid. Medium Density 18 Units/Acre                  | AO  | Airport Operations                           |
| URM12     | Urban Resid. Medium Density 12 Units/Acre                  |     |  |
| URM6      | Urban Resid. Medium Density 6 Units/Acre                   |     |  |
| UR4       | Urban Residential 4 Units/Acre                             |     |  |
| UR3       | Urban Residential 3 Units/Acre                             |     |  |
|           |  |     |  |
| RR3       | <b>RURAL RESIDENTIAL</b><br>Rural Residential 3 Units/Acre |     |  |
| RR2       | Rural Residential 2 Units/Acre                             |     |  |
| RR1       | Rural Residential 1 Unit/Acre                              |     |  |
| RR1       | Rural Residential Island                                   |     |  |
| RR2A      | Rural Residential 1 Unit/2 Acres                           |     |  |
| RR5A      | Rural Residential 1 Unit/5 Acres                           |     |  |
| RR10A     | Rural Residential 1 Unit/10 Acres                          |     |  |
| TZ        | Transition - R5A/RR1                                       |     |  |
|           |  |     |  |
| R2A       | <b>RURAL</b><br>Rural 1 Unit/2 Acres                       |     |  |
| R5A       | Rural 1 Unit/5 Acres                                       |     |  |
| R10A      | Rural 1 Unit/10 Acres                                      |     |  |
|           |  |     |  |
| AG        | <b>RESOURCES</b><br>Agriculture                            |     |  |
| CF        | Commercial Forestry  |     |  |
| RF        | Rural Forestry   |     |  |
| MRL       | Mineral Resource Lands<br>(Overlay Zone)                   |     |  |

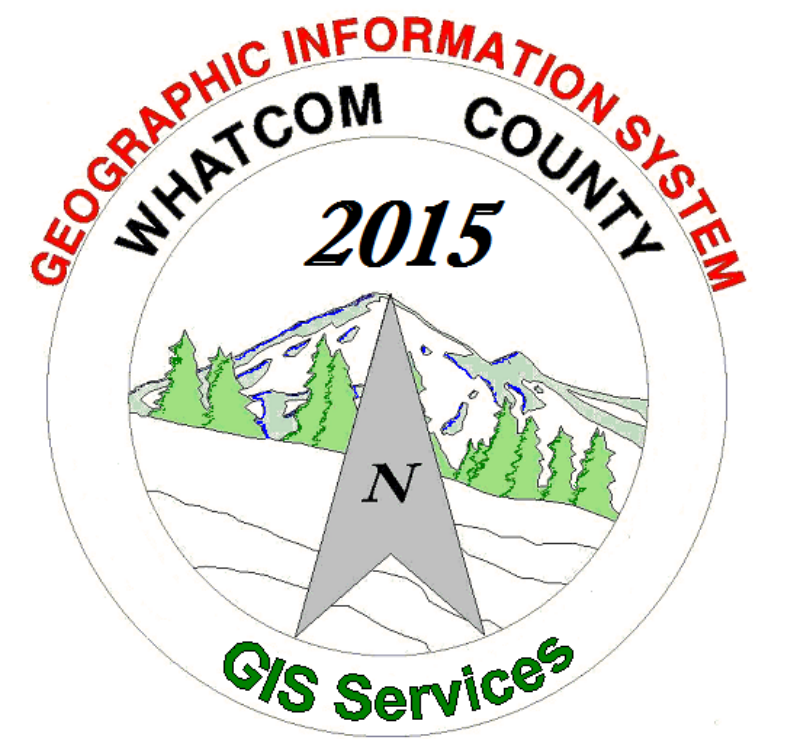
-  Zoning Boundary
-  Lake Whatcom Water Resource Protection Overlay Zone and TDR Sending Area (Sudden Valley excluded from TDR Sending Area)
-  Lake Samish Water Resource Protection Overlay Zone
-  Urban Growth Area
-  Major Port/Industrial UGA
-  Urban Growth Area Reserve
-  MRL Overlay Zone

This map was produced from data maintained in the Whatcom County Geographic Information System by the Planning and Development Services Division and the Assessor's Office. For further information regarding maps, data sources, or the availability of GIS products and services please contact Planning & Development Services at (360) 676-6907.

**USE OF WHATCOM COUNTY'S GIS DATA IMPLIES THE USER'S AGREEMENT WITH THE FOLLOWING STATEMENT:**  
Whatcom County disclaims any warranty of merchantability or warranty of fitness of this map for any particular purpose, either express or implied. No representation or warranty is made concerning the accuracy, currency, completeness or quality of data depicted on this map. Any user of this map assumes all responsibility for use thereof, and further agrees to hold Whatcom County harmless from and against any damage, loss, or liability arising from any use of this map.



1 inch equals 0.5 miles  
0 1,250 2,500 5,000 Feet



**T37N - 6E**

Sources: Esri, HERE, DeLorme, USGS, Intermap, increment P Corp., NRCAN, Esri Japan, METI, Esri China (Hong Kong), Esri (Thailand), TomTom, Mapbox, © OpenStreetMap contributors, and the GIS User Community