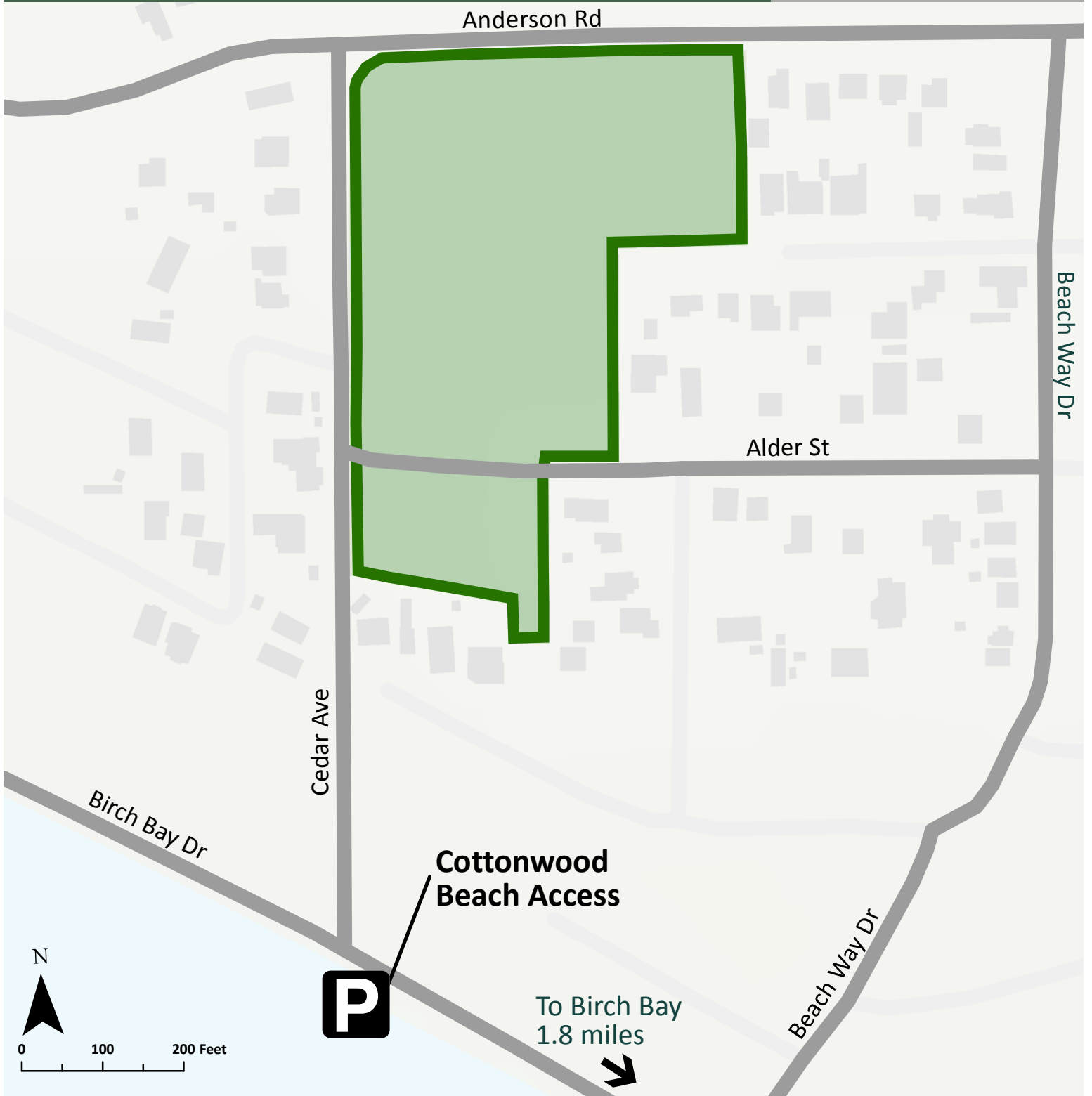




Halverson Park

Whatcom County
Parks & Recreation



-  Parking
-  Park Boundary

 Road

Note to map users: Mobile maps approximate your location and may be inoperable at any time on any device. There are no warranties to accompany this material. Use at your own risk.



Scan for mobile map and to learn more



(360) 778-5850
WWW.WHATCOMCOUNTY.US/PARKS