

# National Pollutant Discharge Elimination System (NPDES) Phase II Permit

---

Whatcom County Public Works  
Special Programs Division/NPDES  
Surface Water Work Session  
March 24, 2015



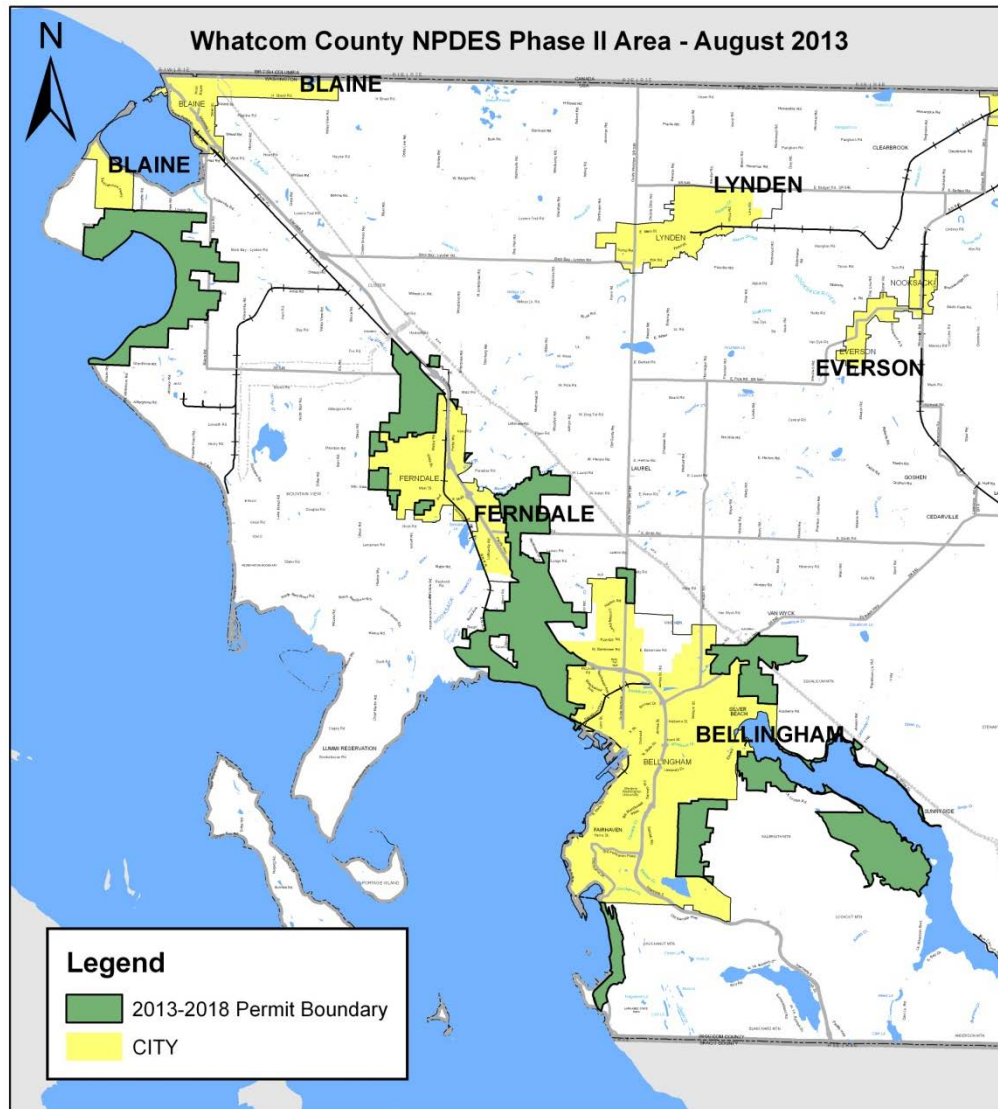
# NPDES Phase II Program

- The Clean Water Act allows the Environmental Protection Agency (EPA) to authorize the National Pollutant Discharge Elimination System (NPDES) Permit Program to state governments.
  - The Clean Water Act
    - State Water Pollution Control Act
      - Western Washington Phase II Municipal Stormwater Permit
- “Phase I” cities serving more than 100,000 people or counties serving more than 250,000 people
  - Counties: Clark, King, Pierce, Snohomish (entire)
  - Cities: Seattle and Tacoma
- “Phase II” cities serving more than 10,000 people or counties serving less than 100,000 people
  - 111 municipalities, including Whatcom County
    - Cities and urban portions of counties
    - “Urban” portions defined by census
- Whatcom County under Permit since 2007
- 2007-2012 Permit (\*With modification in 2009)
- 2012-2013 Permit (\*Continuation of the previous year’s permit)
- 2013-2018 Permit effective August 1, 2013-July 31, 2018

# Whatcom County MS4

- NPDES Phase II Permit regulates discharges from a ***Small Municipal Separate Storm Sewer Systems (MS4s)*** into water bodies of the State (e.g. rivers, lakes, etc.)
  - MS4s are conveyance systems owned and operated by a municipality (e.g. catch basins, curbs, gutters, ditches, storm drains, etc.).
  - Jurisdictions must protect water quality by implementing programs (required by the Permit) that reduce pollutants from MS4 discharges.
- Approximate number of MS4 facilities:
  - 2,700 catch basins (includes Lake Whatcom watershed)
  - 110 miles of ditches
  - 4,000 culverts
  - 50 outfalls
  - 11 pre-treatment and flow control vaults
  - 9 stormwater filter vaults
  - 8 bioinfiltration and treatment swales
- Area covers approximately 15,000 acres

# NPDES Boundary Map



0 1.25 2.5 5 Miles

# Permit Program Areas

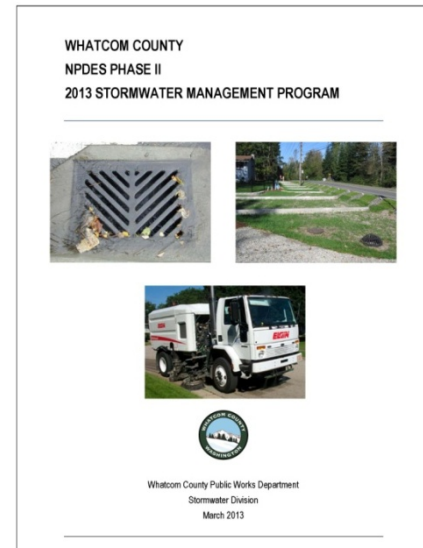
- Public Education and Outreach
- Public Involvement and Participation
- Illicit Discharge Detection and Elimination
- Controlling Runoff from New Development, Redevelopment, and Construction Sites
- Municipal Operations and Maintenance
- Compliance with Total Maximum Daily Load (TMDL) Requirements
- Monitoring and Assessment
- Reporting
- Administration

# Permit Reporting

The 2014 Stormwater Management Program (SWMP) is the official document that describes activities performed by Whatcom County in 2014 to comply with Permit requirements, as well as describes what activities are planned for 2015.

It is intended to be a planning and implementation document for the public, elected officials, and County staff.

It is also submitted annually to Department of Ecology as a requirement of the Permit, along with the Annual Compliance Report.



# 2014 Highlighted Accomplishments

For the calendar year 2014:

- Continued Education and Outreach efforts:
  - Private Stormwater Facility Maintenance Workshops and Inspections
  - Sustainable Landscaping Series
  - Technical assistance for Homeowner Incentive Program
- Conducted dry weather inspections for illicit discharges in Geneva neighborhood.
- Upgraded maintenance and inspection database for municipally-owned and operated facilities.
- Refined Public Works policies and procedures for spill response.



# 2015 SWMP Highlights

- Continue and expand education and outreach efforts.
  - Measure the understanding and adoption of targeted behaviors for specific audiences in at least one subject area of the permit by February 2, 2016
- Initiate project development and consultant selection for Low Impact Development (LID) requirements.
  - Regulations adopted by December 31, 2016
- Conduct annual inspections of all stormwater treatment and flow control facilities.
  - Implement by December 31, 2016.
- Inspect all municipally-owned and operated catch basins once every 2 years, and apply appropriate maintenance standards.
  - Complete schedule by August 1, 2017.
- Complete field screening for Illicit discharges for at least 40% of the MS4.
  - Completed by December 31, 2017.



# Questions?

Whatcom County NPDES Phase II website:

<http://www.npdes.whatcomcounty.org/home>

(2015 SWMP, presentation, and links)

Cathy Craver

Whatcom County Public Works

Special Programs Division

[ccraver@co.whatcom.wa.us](mailto:ccraver@co.whatcom.wa.us)

360-676-6692 x50694