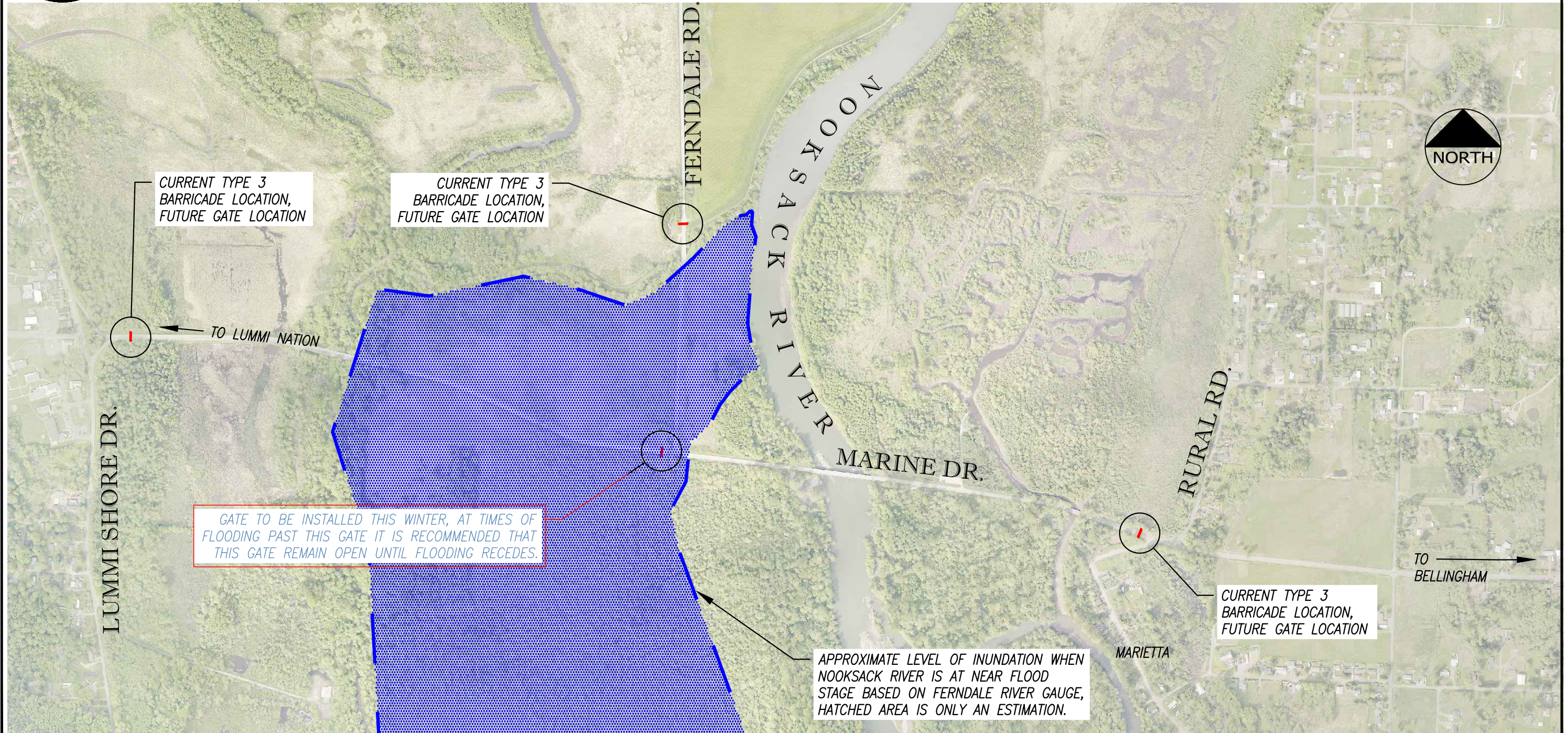




EXHIBIT

DEPARTMENT OF PUBLIC WORKS

322 N. COMMERCIAL ST., SUITE 301
BELLINGHAM, WA 98225
(360) 778-6210



CRP:	918012
DRAWN BY:	C. SWAN
CHECK BY:	J. KARCHER
DRAWING:	918012_Marine and Slater Location Map.dwg

MARINE DRIVE ROADWAY GATES FOR TEMP. CLOSURES INSTALLATION LOCATION ALTERNATIVE

DATE: NOV. 29, 2018

SHEET: 01 OF 02