

Fishtrap Creek Focus Area

Water Quality Status: Fecal Coliform Bacteria

December 2022

Background: Clean water is a valuable resource; it is essential for human health and for the health of fish, shellfish, wildlife, and livestock. Water provides irrigation for crops and a safe place for water-based recreation. To maintain safe shellfish harvest, Washington State has developed standards for fecal bacteria in marine waters. Meeting the fecal coliform benchmarks in freshwater systems leads to satisfying the marine water standards to protect public health.

Freshwater Benchmarks

Geometric Mean

Average sample contains less than:
100 fecal coliform/100mL

- and -

90th Percentile

Less than 10% of samples contain over:
200 fecal coliform/100mL

Routine Monitoring: The Fishtrap Creek drainage has been identified as a **focus area** for water quality monitoring due to high levels of bacteria observed through the routine monitoring program. Whatcom County Public Works (WCPW) has monitored fecal coliform bacteria in the Fishtrap Creek drainage area since March 2015.

What are Fecal Coliform Bacteria?

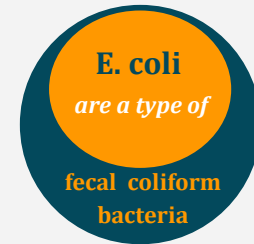
Fecal coliform bacteria are found in human and animal feces. Detection in a creek is a sign that pathogens from these wastes may be polluting the water. Contact with fecal contaminated waters can result in **gastroenteritis, skin rashes, upper respiratory infections** and other illnesses.

Where Does the Bacteria Come From?

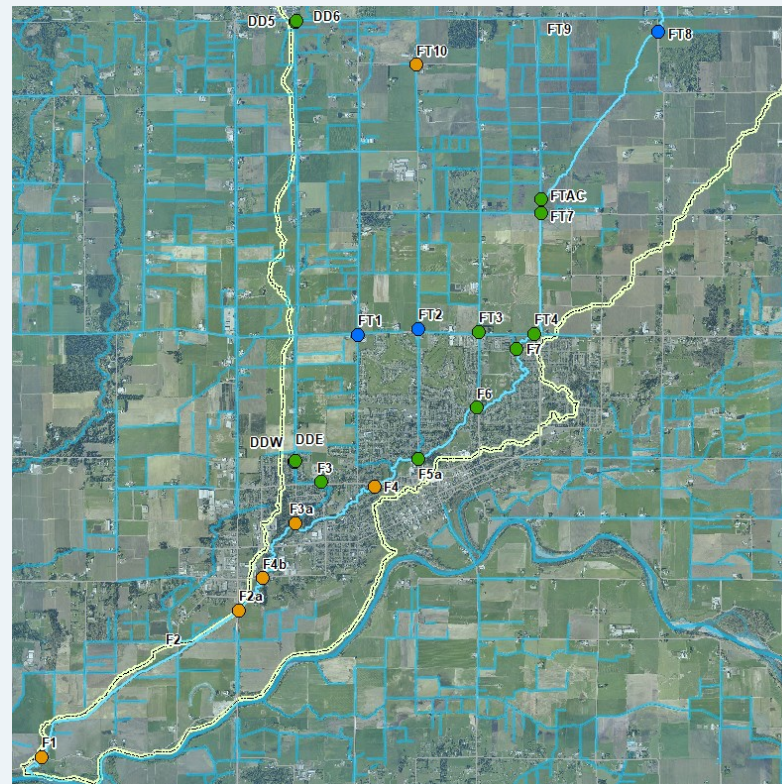
Potential sources of bacteria include:

- 1) Animal waste from livestock, domestic pets, and wildlife
- 2) Human sewage from failing septic systems, leaking sewer lines or cross-connections between sewer and stormwater systems

Other potential sources are continually being investigated.



Whatcom County Public Works Fishtrap Creek Water Quality Monitoring Stations



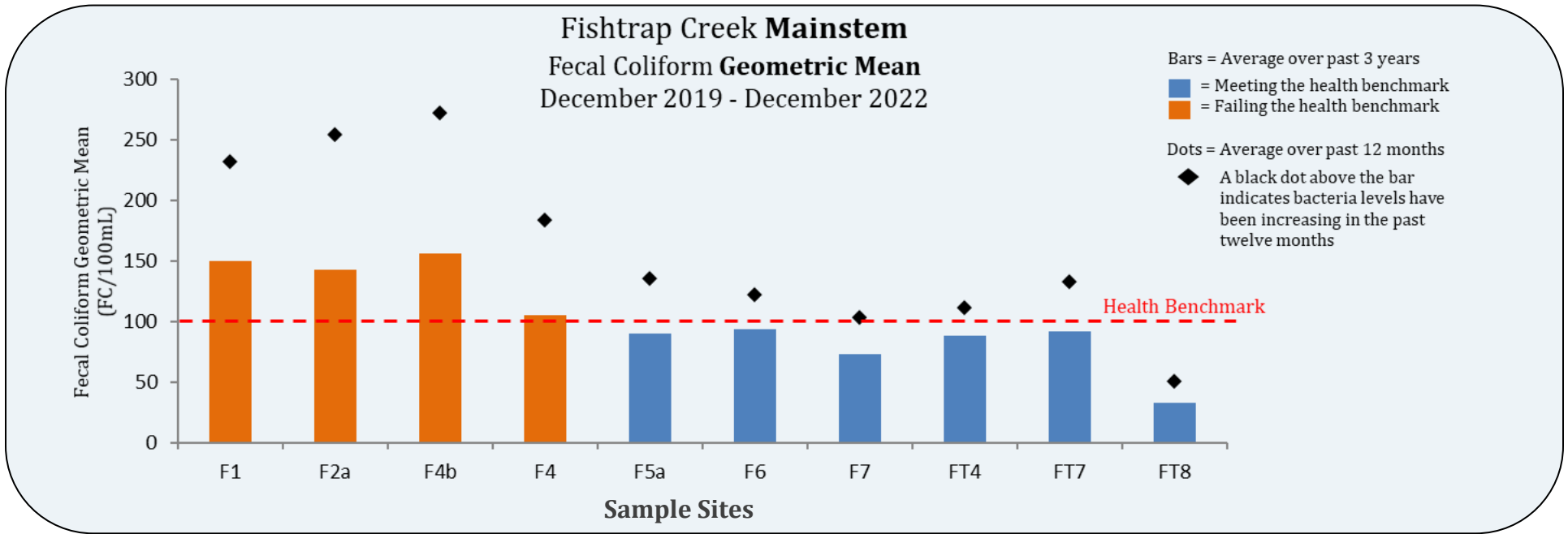
Water Quality Status (Geometric Mean)

- < 50 FC/100mL
- 50-100 FC/100mL
- 100-200 FC/100mL
- 200-500 FC/100mL
- 500-1000 FC/100mL
- > 1000FC/100mL

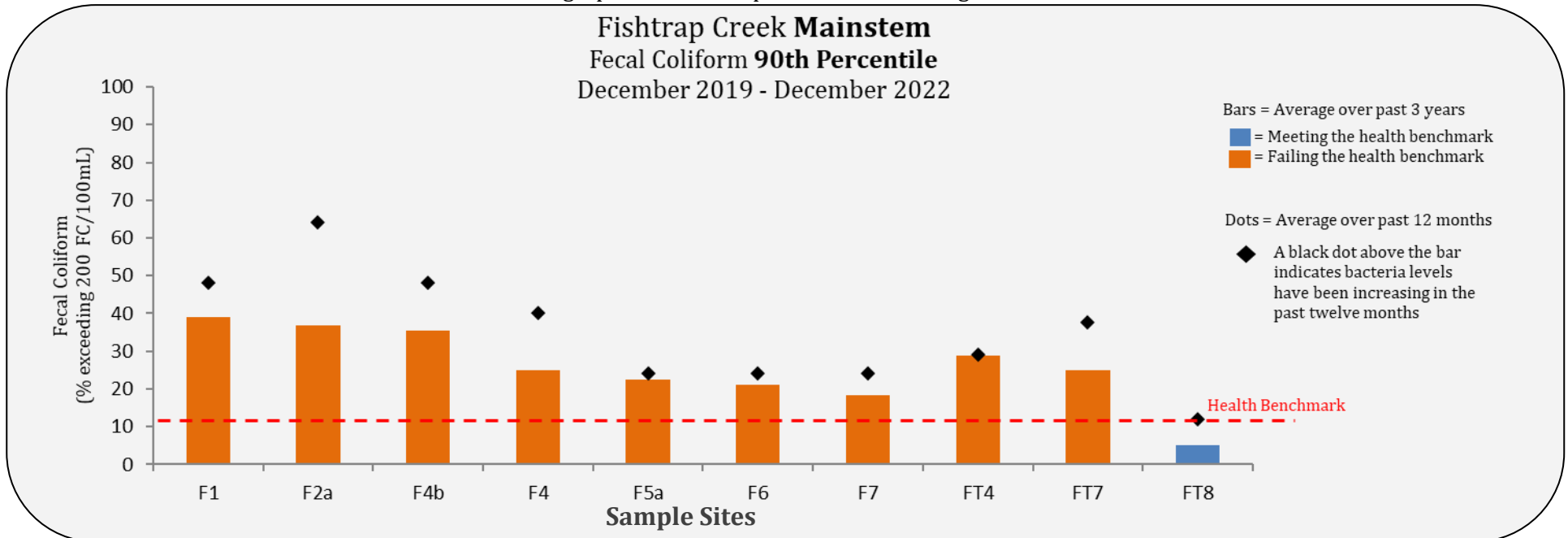
Note: This map illustrates the status of each station for the 3-year geometric mean to assist with identifying hot spots.

Fishtrap Creek Focus Area Mainstem Stations Comparison of Bacteria Levels to Health Benchmarks

Refer to the map on page 1 or the tables on page 4 for site locations.



*The bar must be blue on both graphs for the sample site to be meeting the freshwater health benchmark.



Fishtrap Creek Focus Area Mainstem Stations

13- Month Historical Fecal Coliform Bacteria Data

Results in light orange exceeded 200 FC/100mL. Results in dark orange exceed 1000 FC/100mL.

Date	Rainfall Data (inches)		Creek Access Point	River Rd.	Guide Meridian	Kok Rd.	Main St.	Depot Rd. Bridge	Bender Rd.	Aaron	Badger	Pangborn	Northwood
	24 hr*	72 hr**	F1	F2a	F4b	F4	F5a	F6	F7	FT4	FT7	FT8	
11/8/21	0.00	0.47	46	40	68	31	50	44	52	46	33	7	
11/22/21	0.01	0.05	300	44	46	28	8	21	23	42	40	11	
12/6/21	0.37	0.37	149	84	46	129	114	69	2	25	25	17	
12/20/21	0.00	1.61	350	250	109	136	100	80	106	104	109	82	
1/3/22	0.11	0.01	40	220	220	44	116	52	80	108	48	92	
1/18/22	0.27	0.53	84	64	94	50	92	118	333	540	235	118	
1/31/22	0.10	0.42	108	78	80	137	118	78	176	157	98	176	
2/14/22	0.43	0.00	50	58	42	373	108	82	118	112	50	13	
2/14/22	0.45	0.58	480	353	314	255	196	333	314	235	440	960	
3/15/22	0.26	1.40	490	800	900	1400	300	580	460	1200	1600	1100	
3/28/22	0.16	0.12	42	44	52	220	54	44	530	480	46	8	
4/14/22	0.00	0.03	96	76	96	46	44	36	42	28	48	7	
4/25/22	0.25	0.1	68	100	104	200	104	110	28	23	33	30	
5/9/22	0.02	0.11	46	40	66	112	40	41	40	26	1000	7	
5/24/22	0.00	0.00	145	55	82	60	112	56	50	58	16	15	
6/6/22	0.00	1.46	450	1300	1100	700	480	440	580	440	490	70	
6/21/22	0.06	0.08	400	570	400	84	127	84	28	40	36	33	
7/5/22	0.00	0.09	560	260	260	90	112	118	82	102	60	36	
7/18/22	0.01	0.02	320	210	230	136	82	102	114	91	270	31	
8/15/22	0.00	0.00	1400	1900	4300	73	106	98	78	86	480	7	
8/29/22	0.00	0.00	270	400	590	410	300	191	98	102	136	39	
9/12/22	0.00	0.00	73	230	200	109	240	78	48	62	76	46	
9/27/22	0.00	0.00	280	220	145	330	70	44	23	31	90	56	
10/10/22	0.00	0.00	200	210	200	420	73	66	74	ST	ST	34	
10/24/22	0.00	0.00	78	600	1100	3600	3800	2000	155	260	800	80	
11/7/22	0.03	2.26	7000	1900	2400	3000	2600	700	270	330	210	200	
11/21/22	NR	0.00	92	56	64	26	18	380	31	33	58	52	
12/5/22	NR	NR	20000	20000	20000	58	58	66	164	136	164	230	

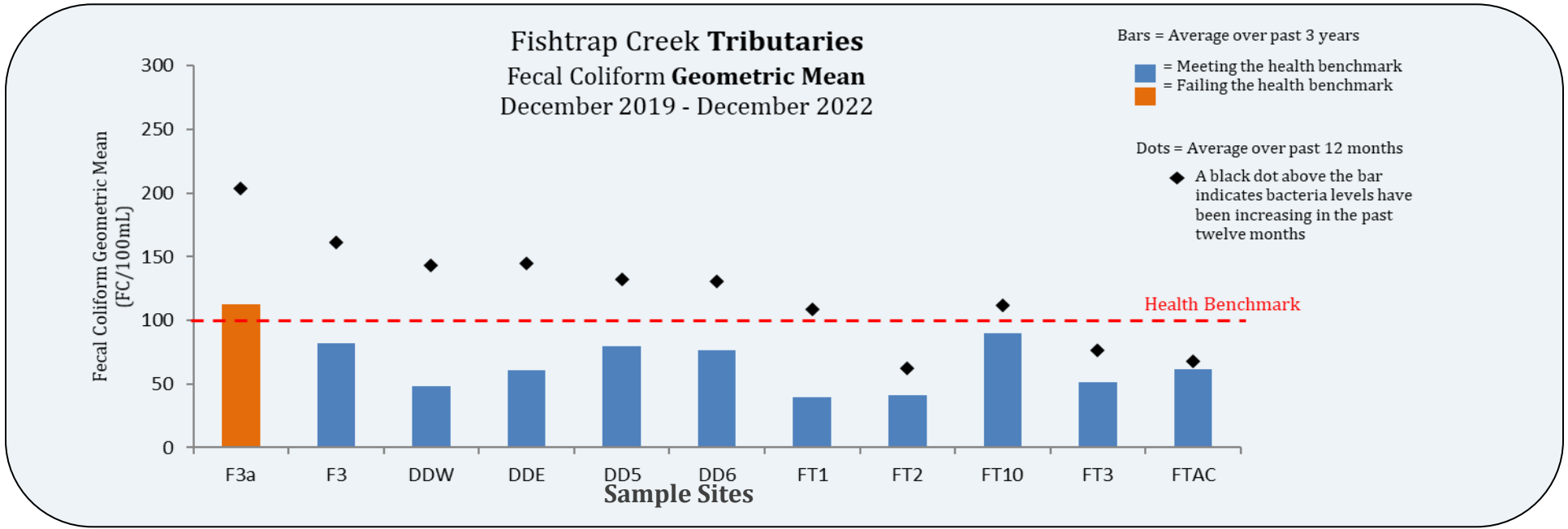
Gray box indicates an event where no sample was collected for varying reasons. ST- Stagnant, FL- Flood, D-Dry, TNS-Temporarily Not Sampling.

¹ Rainfall data from CoCoRAHS station WA-WC-8, ² Rainfall data from Lynden AgWeathernet. *Day of sampling event **Three days prior to, but not including, day of sampling event

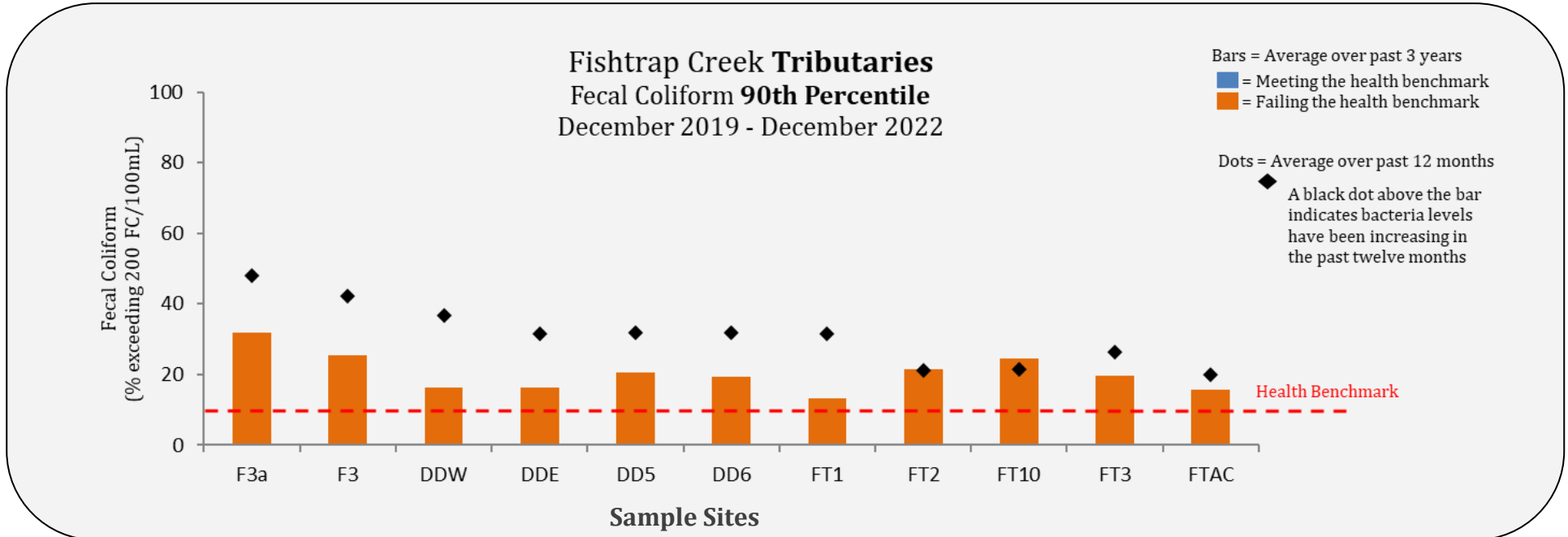
Fishtrap Creek Focus Area *Tributary Stations*

Comparison of Bacteria Levels to Health Benchmarks

Refer to the map on page 1 or the tables on page 5 for site locations.



*The bar must be blue on both graphs for the sample site to be meeting the freshwater health benchmark.



Fishtrap Creek Focus Area *Tributary Stations*

13- Month Historical Fecal Coliform Bacteria Data

Results in light orange exceeded 200 FC/100mL. Results in dark orange exceed 1000 FC/100mL.

Date	Creek Access		Double Ditch at Fishtrap	Double Ditch at Lynden	DD West at Pine	DD East at Pine	DD West at Border	DD East at Border	Benson at Badger	Depot at Badger	Depot at Visser	Bender at Badger	E Assvink N of Pangborn
	Rainfall Data												
	24 hr*	72 hr**	F3a	F3	DDW	DDE	DD5	DD6	FT1	FT2	FT10	FT3	FTAC
12/6/21	0.37	0.37	30	33	22	58	350	260	13	10	44	2000	23
12/20/21	0.00	1.61	300	270	200	155	1400	1800	15	100	96	7	2
1/3/22	0.11	0.01	2100	6000	6000	6000	6000	6000	21	13	106	18	16
1/18/22	0.27	0.53	96	39	275	82	46	39	116	13	59	31	24
1/31/22	0.10	0.42	25	29	48	34	29	31	39	5	54	11	18
2/14/22	0.43	0.00	29	9	48	7	86	66	275	33	740	314	80
2/28/22	0.45	0.58	720	235	460	373	235	373	4000	235	118	60	64
3/15/22	0.26	1.40	420	290	98	182	210	220	230	1600	30	182	230
3/28/22	0.16	0.12	56	64	78	23	48	42	109	70	98	112	230
4/14/22	0.00	0.03	200	92	33	106	90	110	36	66	66	20	8
4/25/22	0.25	0.10	82	44	38	30	460	390	440	54	13	230	40
5/9/22	0.02	0.11	64	30	40	106	31	44	18	26	6000	250	270
5/24/22	0.00	0.00	240	220	23	240	46	60	23	13	173	56	31
6/6/22	0.00	1.46	270	90	100	76	36	55	520	280	300	270	1400
6/21/22	0.06	0.08	1900	1800	380	40	66	44	40	44	21	50	104
7/5/22	0.00	0.09	210	164	260	118	34	42	94	40	D	104	155
7/18/22	0.01	0.02	380	70	90	600	60	62	102	86	D	116	108
8/15/22	0.00	0.00	62	D	ST	D	36	28	ST	ST	D	D	34
8/29/22	0.00	0.00	109	D	D	D	56	50	D	ST	D	D	52
9/12/27	0.00	0.00	118	D	D	D	44	44	D	D	D	D	182
9/27/22	0.00	0.00	94	D	D	D	26	40	D	D	D	D	76
10/10/22	0.00	0.00	90	D	D	D	58	41	D	D	D	D	66
10/24/22	0.00	0.00	240	ST	D	D	900	1200	ST	D	D	D	700
11/7/22	0.03	2.26	490	510	209	800	1500	500	1600	2700	ST	7000	100
11/21/22	NR	0.00	44	23	8	15	48	31	40	26	D	21	54
12/5/22	NR	NR	20000	20000	20000	20000	20000	20000	155	50	D	23	46

Gray box indicates an event where no sample was collected for varying reasons. ST- Stagnant, FL- Flood, D-Dry, TNS-Temporarily Not Sampling.

¹ Rainfall data from CoCoRAHS station WA-WC-8, ² Rainfall data from Lynden AgWeathernet. *Day of sampling event **Three days prior to, but not including, day of sampling event