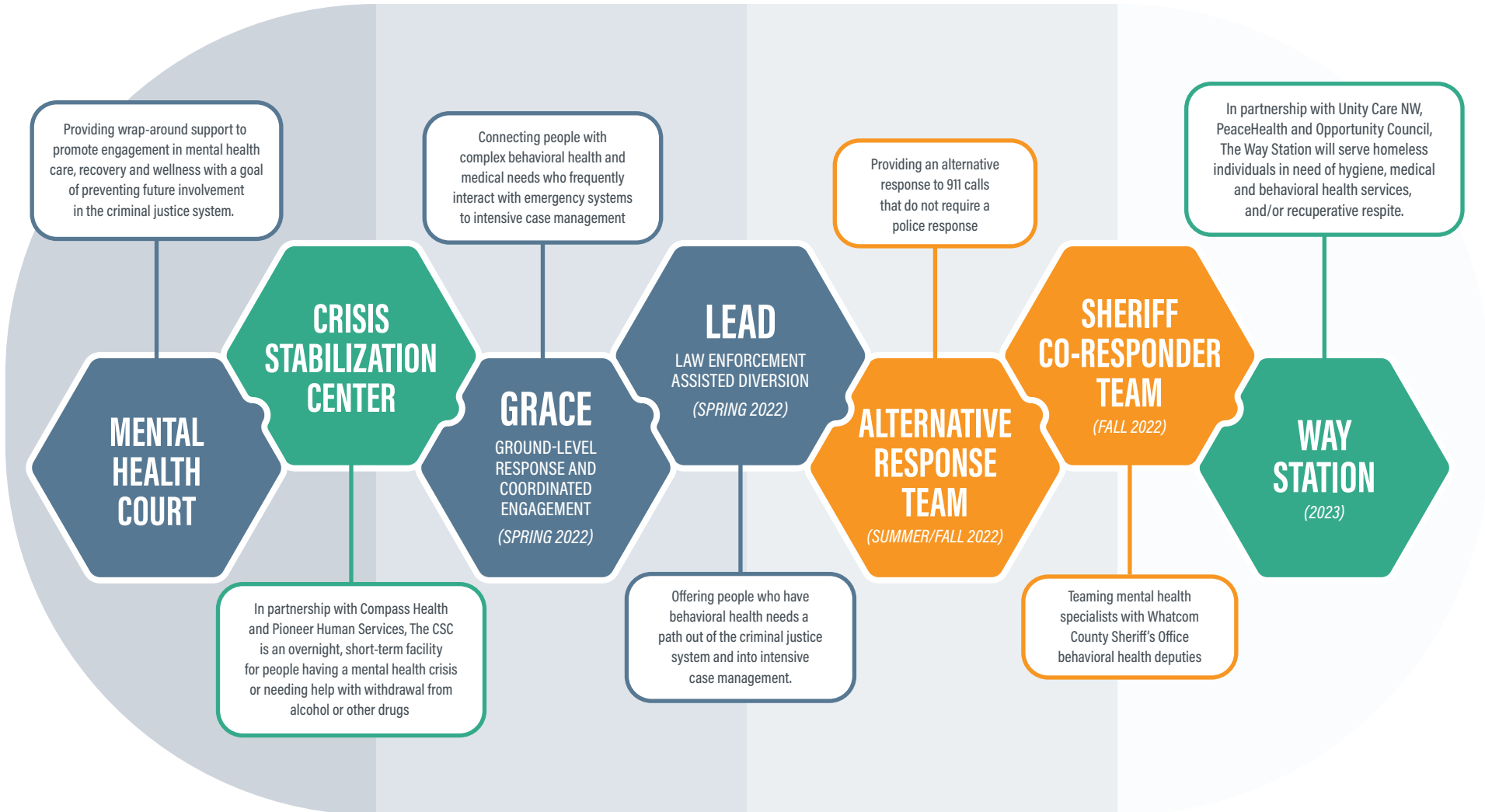


RESPONSE SYSTEMS DIVISION SERVICES TIMELINE 2022-2024

LONG-TERM SUPPORT <i>Improving behavioral health through intensive case management</i>	IMMEDIATE NEEDS <i>Helping people in crisis in the moment</i>	SHORT-TERM SERVICES <i>Providing for needs beyond the first 24 hours</i>
--	---	--



Whatcom County
HEALTH
Department



- This roadmap shows the different response services that will be provided by WCHD over the coming 12 months and beyond
- These are some but not all of WCHD's behavioral health programs
- Our community partners provide other programs not shown on this roadmap